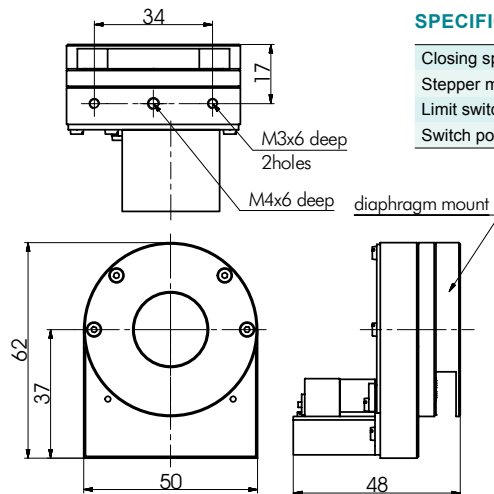


995 Series

MOTORIZED IRIS DIAPHRAGMS
 (Max. Aperture Range 5-27 mm)


995 Series Motorized Iris Diaphragms are available with various aperture ranges, with apertures from 5 mm to 98 mm. Irises with max. apertures from 5 mm to 27 mm are shown on this page. Irises with max. apertures up to 27 mm close from min. to max. in 1.2 seconds with resolution depending on aperture size (see table below). Zero aperture motorized iris diaphragms are available on request, max. aperture sizes from 12 mm to 40 mm.



SPECIFICATIONS

Closing speed (min to max)	1.2 seconds
Stepper motor/gear	50:1
Limit switch	2 mechanical
Switch polarity	pushed is closed

TEMPERATURE LIMITS

- AR - Leaves with AR coating, for temperatures up to 180 °C
- N - Springsteel, black finished, for temperatures up to 250 °C
- H - Stainless steel, for temperatures up to 400 °C

Catalogue number	Diaphragm Used	Min. Clear Aperture, mm	Max. Clear Aperture, mm	Resolution, steps per mm	Price, EUR
995-1005-AR	993-1005-AR	0.5	5	444	855
995-1005-N	993-1005-N	0.5	5	444	855
995-1207-AR	993-1207-AR	0.5	7	308	855
995-1207-N	993-1207-N	0.5	7	308	855
995-1488-N	993-1488-N	1	8	286	855
995-1482-N	993-1482-N	0.5	8.2	260	855
995-1912-AR	993-1912-AR	1	12	182	855
995-1912-H	993-1912-H	1	12	182	855
995-1912-N	993-1912-N	1	12	182	855
995-2214-AR	993-2214-AR	1	14	154	855
995-2214-N	993-2214-N	1	14	154	855
995-2415-H	993-2415-H	1	15	143	855
995-2415-N	993-2415-N	1	15	143	855
995-2818-AR	993-2818-AR	1	18	118	855
995-3020-AR	993-3020-AR	1.2	20	106	855
995-3020-H	993-3020-H	1.2	20	106	855
995-3020-N	993-3020-N	1.2	20	106	855
995-3322-N	993-3322-N	1.5	22	98	855
995-3725-N	993-3725-N	1.5	25	85	855
995-4027-AR	993-4027-AR	1.5	27	78	855
995-4027-H	993-4027-H	1.5	27	78	855
995-4027-N	993-4027-N	1.5	27	78	855

RECOMMENDED CONTROLLERS

980-0040-USB

see page 8.189



980-0030-RS232

see page 8.188

